

The background features a light peach color with several abstract shapes: a large orange shape in the top left, a green shape in the middle left, a white shape in the top right, and a dark grey shape in the bottom right. There are also several dandelion-like illustrations with white stems and seeds, and clusters of black dots of varying sizes scattered throughout.

Descriptions (adjectives)

The background features a light peach color with large, overlapping abstract shapes in shades of orange, teal, and dark grey. Scattered throughout are delicate white line-art floral motifs, resembling dandelion-like seed heads.

1

Greetings & Small Talk

Let's Practice



You

Tell me about yourself.
Who are you?



School

What's your favourite
subject?
What did you learn at
school?



Friends

Who are your friends?
What fun things do
you do with your
friends?

The background features a light peach color with large, overlapping abstract shapes in shades of orange, teal, and dark grey. Scattered throughout are white line-art floral motifs, including dandelion-like seed heads and clusters of small circles.

2

Intro/Lesson
Warm-up

Describe your best friend.
What does she/he look like?



The background features a light peach color with large, organic shapes in shades of orange, teal, and dark grey. Scattered throughout are white line-art illustrations of dandelion-like seed heads and small black dots.

3

Vocabulary

The background is a light peach color with several large, overlapping organic shapes in shades of orange, teal, and dark grey. Scattered throughout are white line-art illustrations of plants with multiple small circular heads on thin stems, resembling dandelion seed heads or similar botanical structures. There are also several small black dots of varying sizes scattered across the design.

Descriptions

Describe a Person



1

Gender

Boy or Girl
Man or Woman

2

Age

How old is he / she?

3

Appearance

height / shape /
facial features

4

Nationality

American /
Chinese / French
/ Egyptian



Gender

1

Girl

Woman

2

Boy

Man

I am a _____.

Age



Baby

0-2



Child

3-12



Teenager

13 - 19



Adult

20+



Senior

65+

She/He is a/an _____.

Appearance

Height

tall / short /
medium



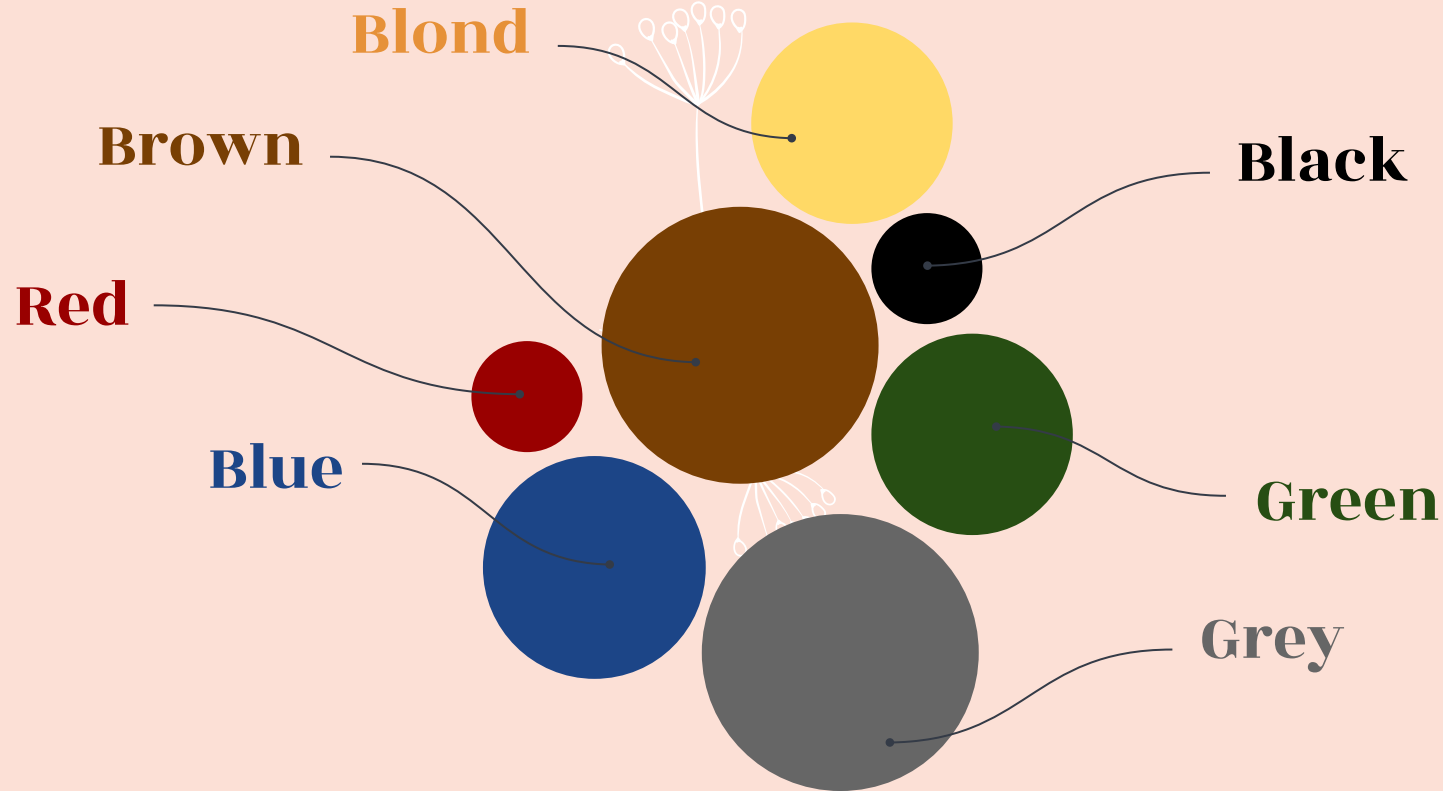
Shape

skinny / slim /
stocky

Facial Features

small / big /
round / thin

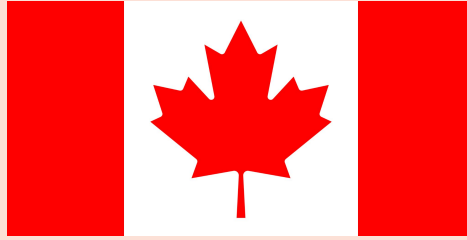
Colors (eyes and hair)



Nationality

(country of students)

Canadian



Egyptian



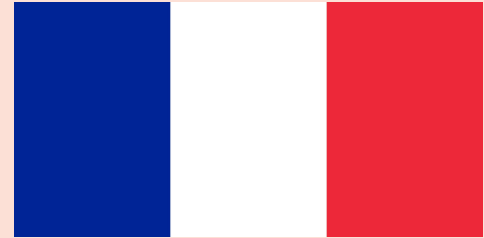
Brazilian



Chinese



French



Spanish



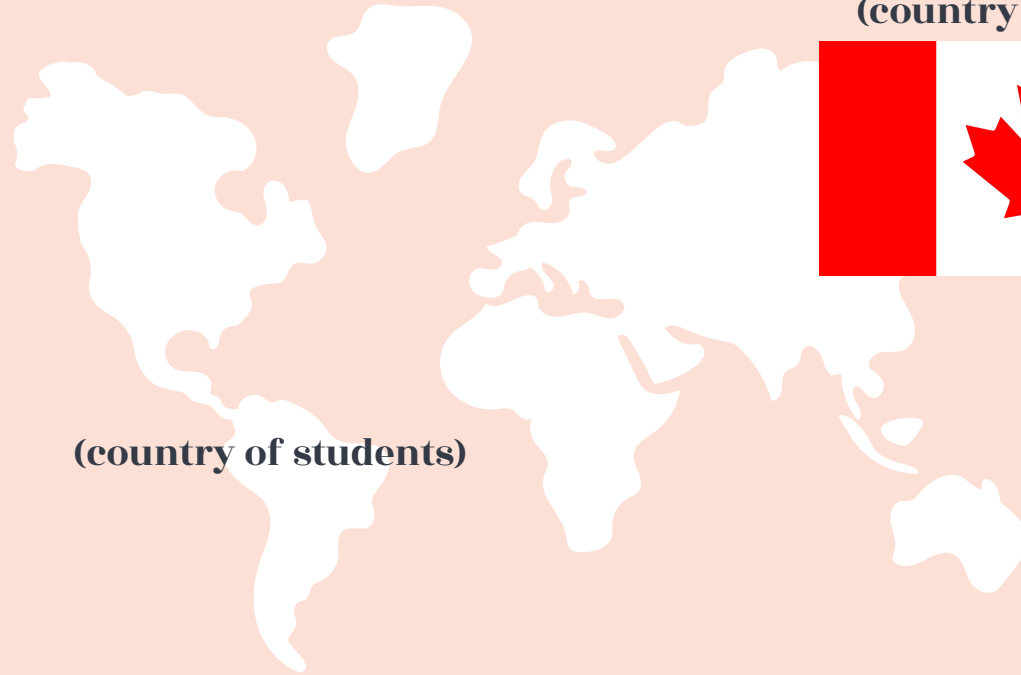
German



Indian

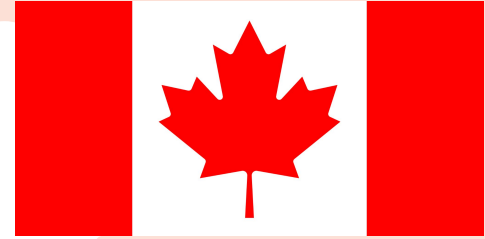


Nationality



(country of students)

(country of teachers)



Personality Trait #1



vs.



Honest

Dishonest

Personality Trait #2



vs.



Talkative

Quiet

Personality Trait #3



vs.



Nice

Mean

Personality Trait #4



VS.



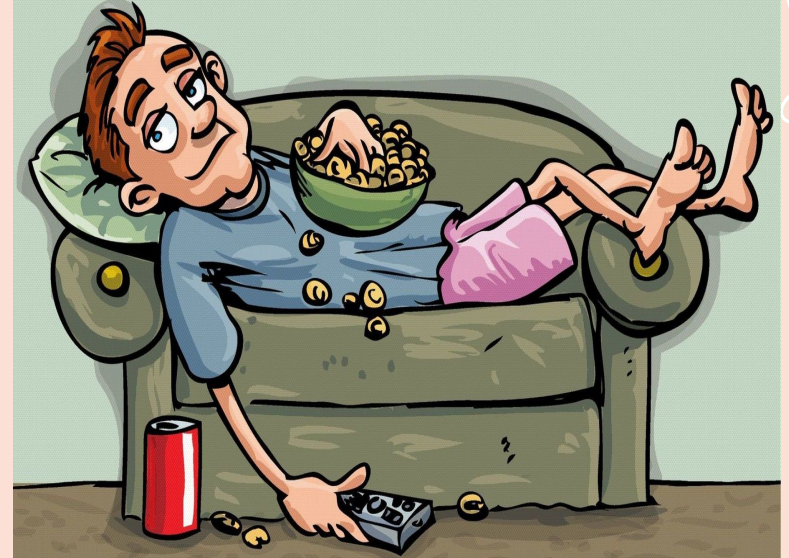
Brave

Shy

Personality Trait #5



vs.



Hardworking

Lazy

Personality Trait #6



vs.



Generous

Selfish

Personality Trait #7



vs.



Funny

Boring

Personality Trait #8



vs.



Cautious

Careless

The background features a light peach color with large, overlapping abstract shapes in shades of orange, teal, and dark grey. Scattered throughout are delicate white line-art floral motifs, resembling dandelion seed heads, and small black dots of varying sizes.

4

Sentence Structure

The background features a light peach color with various abstract elements: large orange and teal circles, white dandelion-like seed heads, and clusters of black dots of varying sizes.

Question:

What is his/her nationality?

Answer:

He/She is (nationality).

Examples:

She is Canadian.

He is Egyptian.

He is French.

The background is a light peach color with various abstract decorative elements. In the top left, there are orange and teal shapes with white line art of a plant and black dots. In the top right, there are orange and white shapes with similar line art and dots. In the bottom left, there are orange and white shapes with line art and dots. In the bottom right, there are orange and teal shapes with line art and dots. There are also dark grey shapes on the left and right sides.

Question:
What is he/she like?

Answer:

He/She is **(personality trait)** and **(personality trait)**.

Examples:

She is **shy** and **cautious**.

He is **talkative** and **funny**.

He is **hardworking** and **honest**.



Question:

What does he/she look like?

Answer:

He/She is **(height)** and **(body shape)** with **(facial features or hair/eye colour)**.

Examples:

She is **tall** and **slim** with **brown** hair.

He is **short** and **stocky** with **blue** eyes.

He is **tall** and **skinny** with a **round** face.

The background features a light peach color with large, overlapping abstract shapes in shades of orange, teal, and dark grey. Scattered throughout are white line-art floral motifs, including dandelion-like seed heads and clusters of small black dots.

5

Question Practice

The background is a light peach color with abstract, modern illustrations. There are large, overlapping circles in shades of orange, teal, and white. Some circles are partially cut off by the edges. There are also white line-art drawings of plants with multiple thin stems ending in small ovals, resembling a dandelion seed head. Small black dots of various sizes are scattered throughout the design.

**Let's describe
someone we
know!**



Personality

Quiet vs. Talkative

Generous vs. Selfish

Honest vs. Dishonest

Funny vs. Boring

Lazy vs. Hard-working

Nice vs. Mean

Brave vs. Shy

Cautious vs. Careless





Question 1

Tell me 2 words that describe you!

Answer: I am _____ and _____.

Examples:

I am **cautious** and **shy**.

I am **talkative** and **honest**.



Personality

Quiet vs. Talkative

Generous vs. Selfish

Honest vs. Dishonest

Funny vs. Boring

Lazy vs. Hard-working

Nice vs. Mean

Brave vs. Shy

Cautious vs. Careless





Question 2

Describe the person next to you!

Answer: _____ is _____ and _____.

Example:

Sarah is funny and lazy.



Personality

Quiet vs. Talkative

Generous vs. Selfish

Honest vs. Dishonest

Funny vs. Boring

Lazy vs. Hard-working

Nice vs. Mean

Brave vs. Shy

Cautious vs. Careless





Question 3

What is your mother like?

Answer: My mother is _____ and _____.

Example:

My mother is **generous** and **hardworking**.

The background is a light peach color with abstract organic shapes in shades of orange, teal, and dark grey. White line-art floral motifs with multiple small circles at the end of thin stems are scattered across the page. A central teal circle contains the number 6.

6

Review

Age



Baby

0-2



Child

3-12



13 - 19



20+



65+

She/He is a/an _____.

Age



Baby

0-2



Child

3-12



Teenager

13 - 19



20+



65+

She/He is a/an _____.

Age



Baby

0-2



Child

3-12



Teenager

13 - 19



Adult

20+



65+

She/He is a/an _____.

Age



Baby

0-2



Child

3-12



Teenager

13 - 19



Adult

20+



Senior

65+

She/He is a/an _____.

Personality Trait #1



vs.



Dishonest

Personality Trait #1



vs.



Honest

Dishonest

Personality Trait #2



vs.



Quiet

Personality Trait #2



vs.



Talkative

Quiet

Personality Trait #3



vs.



Nice



Personality Trait #3



vs.



Nice

Mean

Personality Trait #4



VS.



Shy

Personality Trait #4



VS.



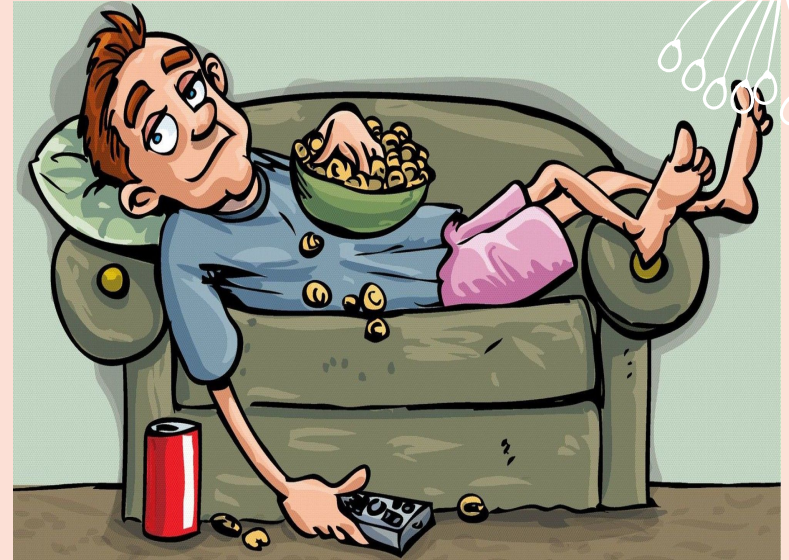
Brave

Shy

Personality Trait #5



vs.



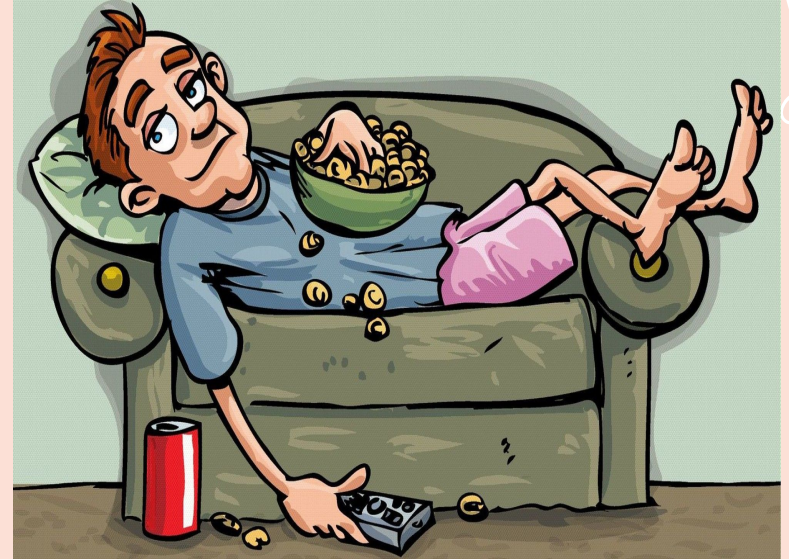
Lazy

Personality Trait #5



Hardworking

vs.



Lazy

Personality Trait #6



vs.



Generous

Personality Trait #6



vs.



Generous

Selfish

Personality Trait #7



vs.



Funny



Personality Trait #7



vs.



Funny

Boring

Personality Trait #8



vs.



Careless



Personality Trait #8



vs.



Cautious

Careless

The background is a light peach color with abstract decorative elements. In the corners, there are clusters of white lines radiating from a central point, resembling dandelion seeds or stylized flowers. There are also solid black circles of various sizes scattered around. Large, soft-edged shapes in shades of orange, teal, and white are positioned at the corners, partially overlapping the text area.

Unscramble the words:

look / he / What / like / does / ?

Answer: He is tall and skinny.

The background is a light peach color with abstract decorative elements. In the corners, there are clusters of white lines radiating from a central point, resembling stylized flowers or dandelions. There are also solid shapes in shades of orange, teal, and dark grey, along with several black dots of varying sizes scattered throughout.

Unscramble the words:

What does he look like?

Answer: He is tall and skinny.

The background is a light peach color with abstract decorative elements. In the corners, there are clusters of white lines radiating from a central point, resembling dandelion seeds or stylized flowers. There are also solid shapes in shades of orange, teal, and dark grey, along with small black dots scattered throughout.

Unscramble the words:

is / nationality / What / his /?

Answer: He is German.

The background is a light peach color with abstract decorative elements. In the corners, there are clusters of white lines radiating from a central point, resembling stylized flowers or dandelions. There are also solid shapes in shades of orange, teal, and dark grey, along with several black dots of varying sizes scattered throughout.

Unscramble the words:

What is his nationality?

Answer: He is German.

The background is a light peach color with abstract, organic shapes in shades of orange, teal, and white. There are several clusters of small black dots and white line-art patterns resembling dandelion seeds or stylized flowers scattered across the page.

Unscramble the words:

is / she / What / like /?

Answer: She is very kind and generous.

The background is a light peach color with abstract decorative elements. There are large, overlapping circles in shades of orange, teal, and white. Some circles contain smaller black dots. There are also white line-art patterns resembling dandelion seeds or stylized plants. The text is centered on the page.

Unscramble the words:

What is she like?

Answer: She is very kind and generous.



Questions?

The background features a light peach color with large, overlapping abstract shapes in shades of orange, teal, and dark grey. Scattered throughout are delicate white line-art floral motifs, resembling dandelion-like seed heads, and small black dots of varying sizes.

7

Appendix: Grammar Practice

Subjects

I

You

He

She

It

We

They

Possessive Adjectives

Subject	Adjective	Example
I	My	This is my book.
You	Your	Where is your phone?
He	His	He lost his car.
She	Her	She found her cat.
It	Its	I have a toy truck. Its wheel is broken.
We	Our	This is our song.
They	Their	Let's go to their house.

Make your own sentences!

Subject	Adjective	Example
I	My	I lost <u> </u> cell phone.
You	Your	
He	His	
She	Her	
It	Its	
We	Our	
They	Their	

Let's Practice!

Fill in the blank:

James has two sons.

(___) sons are very brave.

1. My

2. Her

3. His

The background is a light peach color with abstract decorative elements. In the corners, there are clusters of white lines resembling dandelion seeds or stylized plants, some with black dots. There are also large, soft-edged shapes in shades of orange, teal, and white. The text is centered on the page.

Fill in the blank:

James has two sons.

(His) sons are very brave.

1. My

2. Her

3. His

The background is a light peach color with abstract decorative elements. In the corners, there are clusters of white lines resembling dandelion seeds or flowers, some with black dots. There are also large, soft-edged shapes in shades of orange, teal, and white. The text is centered on the page.

Fill in the blank:

**I will tell you (__) secret.
Don't tell anyone about it.**

1. my

2. her

3. his

The background is a light peach color with abstract decorative elements. In the corners, there are clusters of white lines radiating from a central point, resembling stylized flowers or dandelions. There are also solid shapes in shades of orange, teal, and grey, along with several black dots of varying sizes scattered throughout.

Fill in the blank:

I will tell you (my**) secret.
Don't tell anyone about it.**

1. **my**

2. her

3. his



Fill in the blank:

**I saw Esther and John standing
in front of (____) car**

1. my

2. their

3. his

The background is a light peach color with abstract decorative elements. There are large, overlapping circles in shades of orange, teal, and white. Some circles contain smaller black dots. There are also white line-art patterns resembling dandelion seeds or stylized plants.

Fill in the blank:

**I saw Esther and John standing
in front of **(their)** car**

1. my

2. their

3. his

The background is a light peach color with abstract, organic shapes in shades of orange, teal, and dark grey. There are also white line-art patterns resembling dandelion seeds and clusters of black dots scattered throughout.

Questions?

CREDITS: This presentation template was created by **Slidesgo**, including icons by **Flaticon** and infographics & images by **Freepik**

